



CLASS SERIES 2-Way Active Box Speakers

The Class series allows you to connect any device via stereo auxiliary inputs and listen without the need for an amplifier.

Utilising signal-sensing technology, the Class speakers feature an Auto-Standby function, where the unit switches to sleep-mode if the music has stopped playing, then wakes and powers up when the music starts again. With its weather resistant die-cast enclosure and metal grille, the Class series is the perfect for all your indoor and outdoor entertaining.

+ (See more details on the next page)



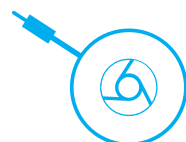
Volume, Bass, and
Treble Controls



AUTO-STANDBY
Signal sensing Tech



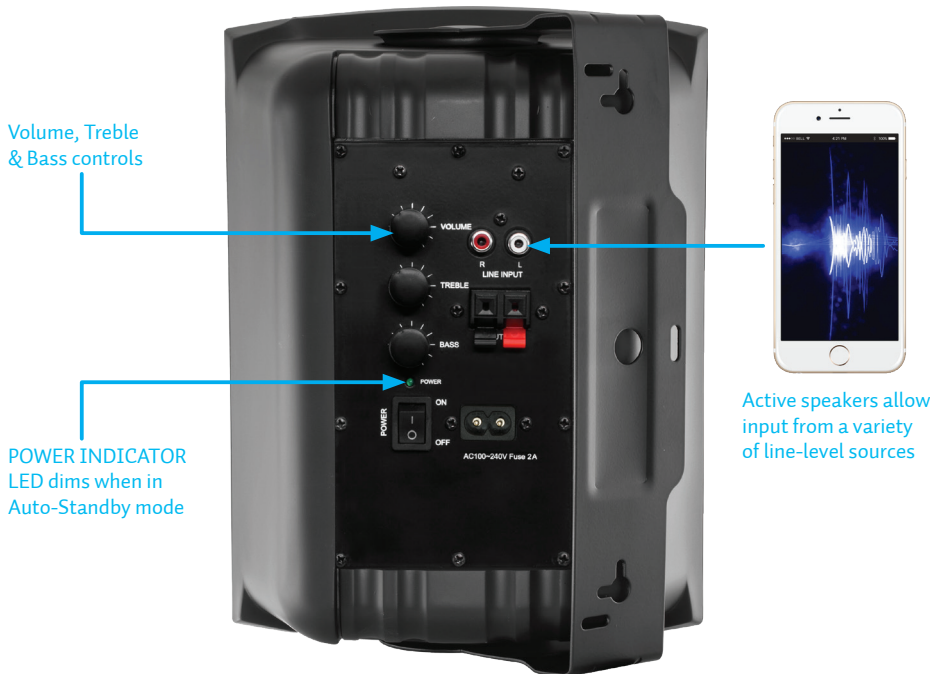
Integrated
Class D amplifier



Connect any audio
source directly!

CLASS SERIES

2-Way Active Wall Speakers



Features

- Built-in Class D amplifier, allowing direct connection from an audio source
- Universal 180° swivel bracket
- Impedance (slave): 8Ω
- Sensitivity: 89 dB
- 240 AC power input
- Back panel:
 - + 2x RCA auxiliary inputs
 - + Bass - Treble - Volume controls
 - + Speaker Left & Right terminals
 - + On / Off switch

Quick Comparison

	CLASS5A	CLASS6A
Black	39814110	39814120
White	39814115	39814125
Enclosure	Weather resistant	
Grille	Powder coated metal	
Tweeter	1" Mylar Dome	
Woofer	5" Polypropylene cone	6½" Polypropylene cone
Frequency Response	60Hz — 18kHz	20Hz — 20kHz
Impedance	8Ω	
Sensitivity	89dB	
Power Capacity	40W RMS (90W Max)	60W RMS (130W Max)
Dimensions (HxWxD)	240 x 180 x 150mm	285 x 205 x 180mm
Weight (Gross)	4.7kg	6.5kg

* PLEASE NOTE: The Class Series active speaker should not be exposed to water.



CLASS5AW

5" ACTIVE SPEAKERS (WHITE)

Code: 39814115

Warranty: 12 months



CLASS5AB

5" ACTIVE SPEAKERS (BLACK)

Code: 39814110

Warranty: 12 months



CLASS6AW

6.5" ACTIVE SPEAKERS (WHITE)

Code: 39814125

Warranty: 12 months



CLASS6AB

6.5" ACTIVE SPEAKERS (BLACK)

Code: 39814120

Warranty: 12 months

All models include:
 - Figure 8 lead
 - 3.6m speaker cable
 - 2m right-angle RCA to RCA lead