

HELLER

Instruction Manual

40cm Pedestal Fan
with Remote Control

Model: HF40BRG



READ AND SAVE THESE INSTRUCTIONS

Please read and follow the instructions in this user manual even if you feel you are familiar with the product, and find a place to keep it handy for future reference.

For your convenience record the complete model number (located on the product identification plate) and the date you received the product, together with your purchase receipt and attach to the warranty and service information. Retain in the event that warranty service is required.

NOTE: The rating of this product (as marked on the product identification plate) is based on specific loading tests. Normal use or the use of other recommended attachments may draw significantly less power.

IMPORTANT SAFEGUARDS

When using any electrically powered product, basic safety precautions should always be followed, including the following:

PLEASE READ ALL INSTRUCTIONS CAREFULLY BEFORE USING THIS PRODUCT

WARNING! - to reduce the risk of fire, electrical shock or injury to persons or property:

- Always operate the product from a power source of the same voltage, frequency and rating as indicated on the product identification plate.
- Remove the unit from its packaging and check to make sure it is in good condition before using.
- Do not let children play with parts of the packaging (such as plastic bags).
- Close supervision is necessary when the product is used by or near children or infirm persons. Do not allow children to use it as a toy.
- Do not operate any product with a damaged cord or plug, or after the product malfunctions, or is dropped or appears damaged in any way. Return the complete product to the place of purchase for inspection, repair or replacement.
- Before unplugging the power cord, be sure to turn the power off. When touching the unit, be sure your hands are dry to prevent electrical shock.
- Never install the unit where it is exposed to direct sunlight, excessive moisture/rain, dust and lack of ventilation near any heat sources.
- Avoid making contact with moving parts. Never insert fingers, pencils or any other objects through the guards whenever the power plug is connected, especially while the unit is working.
- Always place the fan on a stable, level surface when operating to prevent the fan from overturning. Do not run the power cord under carpet. Do not cover the power cord with throw rugs or runners. Route the power cord away from walking paths so that nobody can trip over it. The cable should be kept away from heat, sharp edges and oil.
- To reduce the risk of electric shock, do not immerse or expose the product or flexible cord to rain, moisture or any liquid other than those necessary for correct operation of the product.
- This product should not be used in the immediate vicinity of water, such as bathtub, washbowl, bathroom swimming pool etc. Where the likelihood of immersion or splashing could occur.
- Switch off and unplug from outlet when not in use, before assembling or disassembling parts and before cleaning. Remove by grasping the plug - do not pull on the cord.
- Be sure that no other high current appliances are plugged into the same circuit as your fan, as an overload can occur.
- Avoid the use of an extension cord as the extension cord may overheat and cause a risk of fire.
- Do not use the appliance for other than its intended use.
- Do not use outdoors. **FOR INDOOR USE ONLY.**
- Do not leave the appliance unattended when switched on.

- Do not cover the grill, or operate in close proximity to curtains etc.
- The use of attachments or accessories not recommended or sold by the product distributor may cause personal or property hazards or injuries.
- This product is intended for normal domestic/household use only.
- Never leave a working appliance unattended, even for a short period of time – always switch it off. Please unplug the appliance from the power supply when not in use.
- Use this fan as described in this manual. Any other uses, not recommended by the manufacturer, may cause fire, electric shock, or injury to persons and may void the warranty.
- This appliance is not intended for use by persons (including children) with reduced physical, sensory or mental capabilities, or lack of experience and knowledge, unless they have been given supervision or instruction concerning the use of the appliance by a person responsible for their safety.
- The installation of a residual current device (safety switch) is recommended to provide additional safety protection when using electrical appliances. It is advisable that a safety switch with a rated residual operating current not exceeding 30mA be installed in the electrical circuit supplying the appliance. See your electrician for professional advice.
- **WARNING:** If the supply power cord is damaged, the power cord must be replaced by the manufacturer, its service agent or similarly qualified persons in order to avoid a hazard.
- This product has not been designed for any uses other than those specified in this booklet.
- **CAUTION:** Never insert your fingers or any other objects (hair, clothes, utensils, knives, screw drivers etc.) into the openings of the guard or close to the blade when the appliance is connected to the power supply.
- **CAUTION:** DO NOT COVER the appliance in any way in order to avoid overheating and fire.
- **CAUTION - RISK OF ELECTRIC SHOCK:** To reduce the risk of electric shock do not open this device, there are not serviceable parts for customers. Please refer any maintenance or repair to qualified personnel.

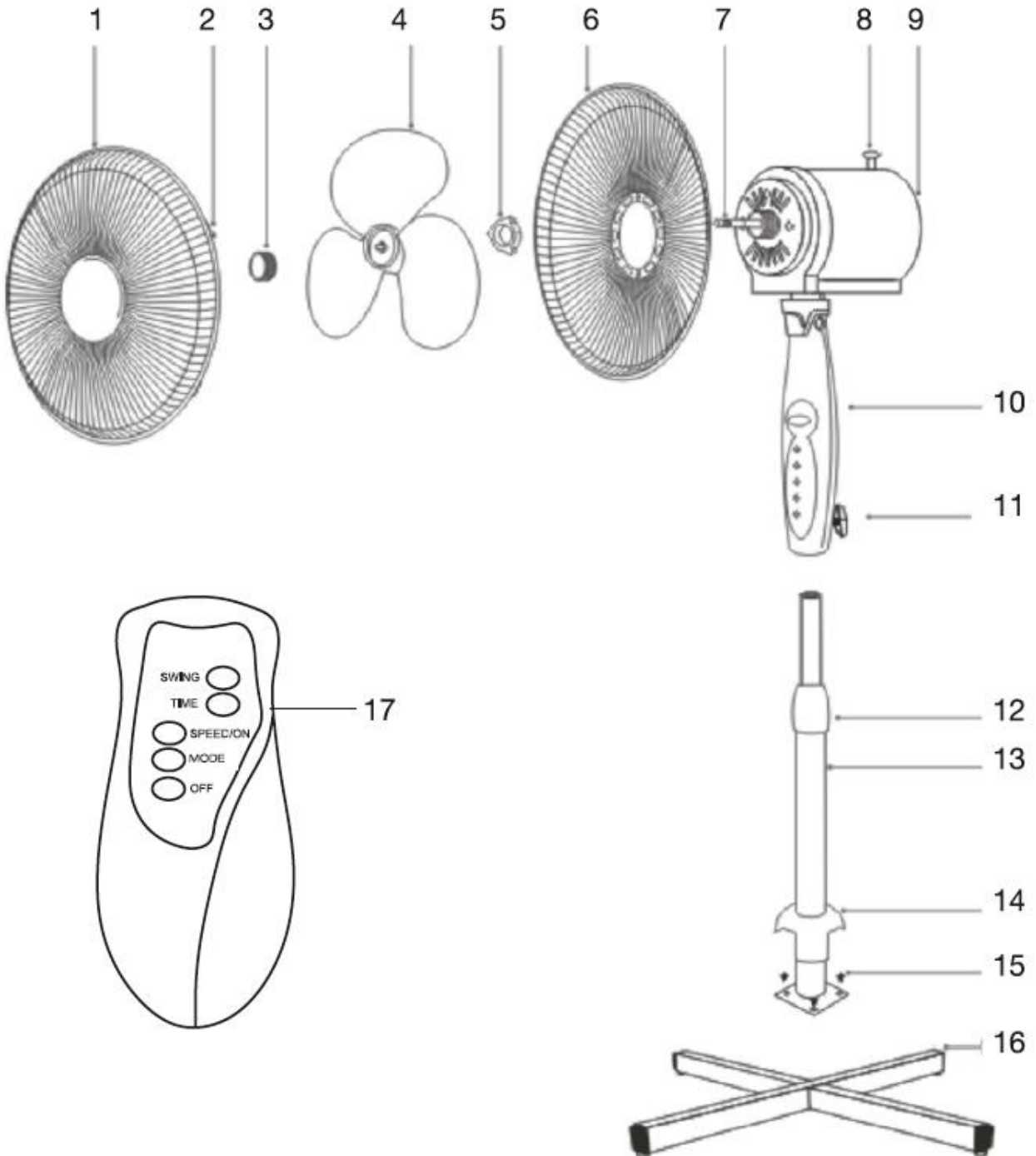
SAVE THESE INSTRUCTIONS

PARTS & FEATURES

1. Front guard
2. Clip
3. Spinner
4. Blade
5. Nut
6. Rear guard

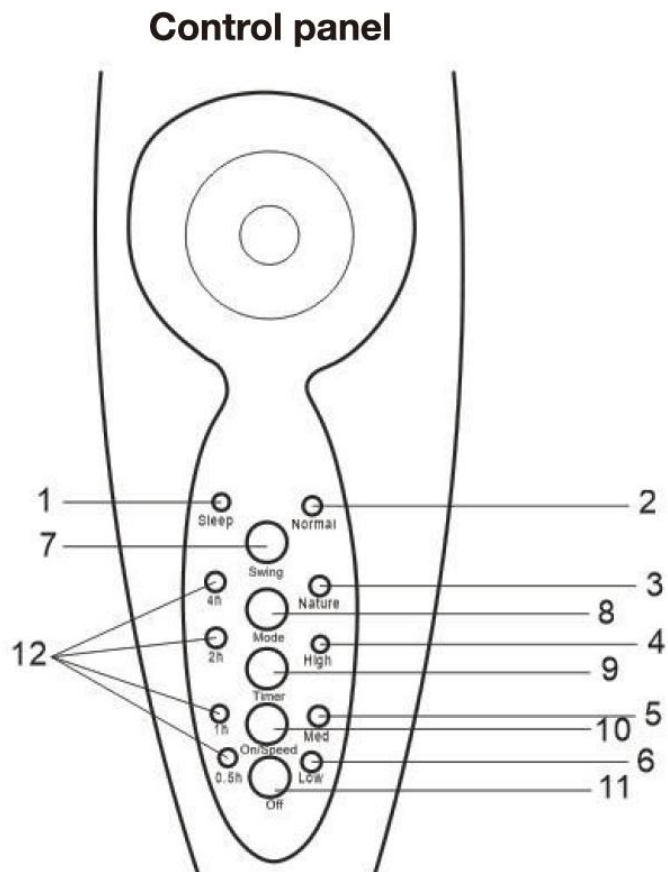
7. Shaft
8. Oscillation pin
9. Motor
10. Switch box
11. Screw B
12. Extension pole

13. Base tube
14. Base cover
15. Screw A
17. Remote control



Control Panel Buttons:

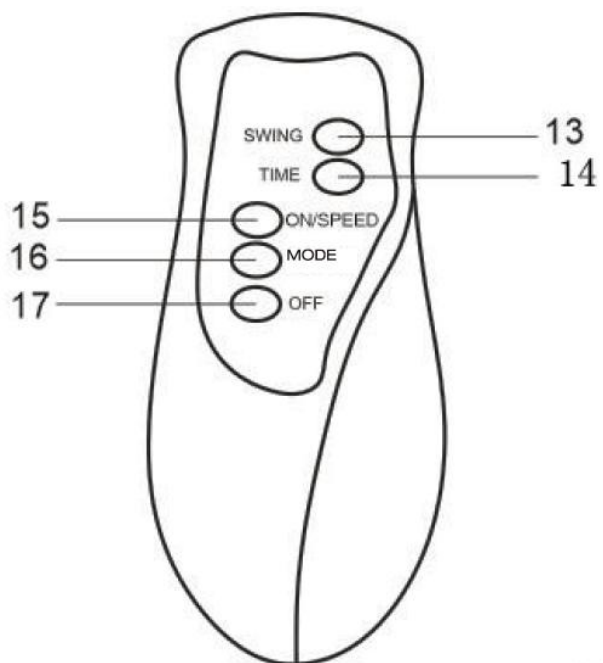
1. Sleep mode indicator
2. Normal mode indicator
3. Nature mode indicator
4. High fan speed indicator
5. Medium fan speed indicator
6. Low fan speed indicator
7. SWING button
8. MODE button
9. TIMER button
10. ON/SPEED button
11. OFF button
12. Timer indicators



Remote Control:

1. SWING Button
2. TIME Button
3. ON/SPEED Button
4. MODE Button
5. OFF Button

Remote control



BEFORE FIRST USE

Before use, remove all packaging and inspect the appliance for any damage. If there appears to be any damage, please take the unit back to place of purchase for a replacement.

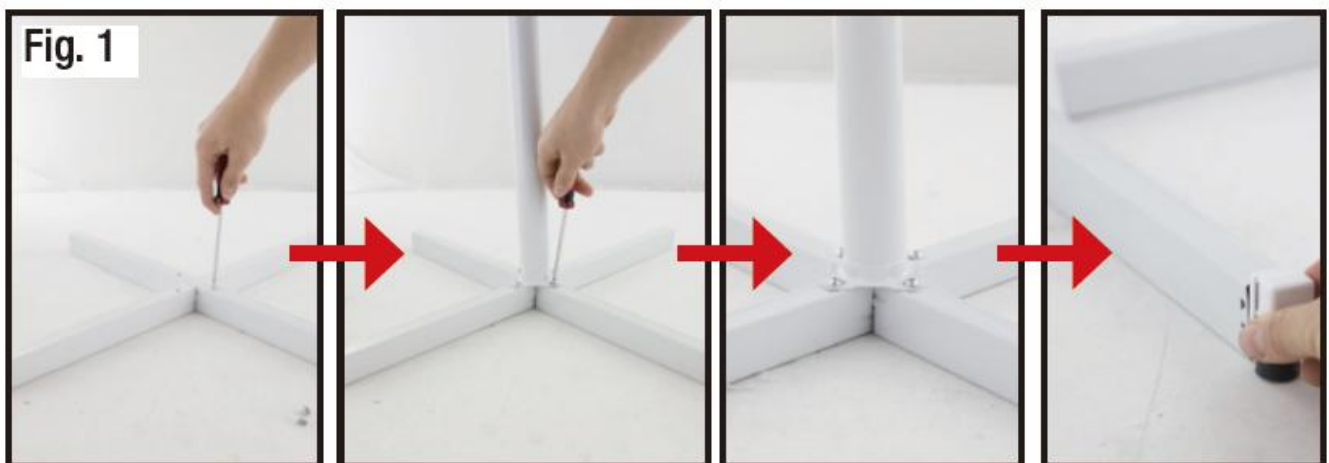
Remote Control Preparation:

- For remote control operation, insert 2 x AAA size batteries (not included with the unit, must be bought separately) into the remote control. Slide out the battery cover with your thumb on the mark at the back of the remote control. Insert the batteries following the polarity symbols (+/-), and then replace the cover to the battery compartment.
- When replacing batteries, always replace all batteries with the new ones of the same size and type. Do not mix old and new batteries. Do not mix alkaline standard (carbon-zinc), or rechargeable (nickel-cadmium) batteries.
- If the remote control will not be used for a long period of time, remove the batteries from the battery compartment to avoid leakage which can damage the remote control.

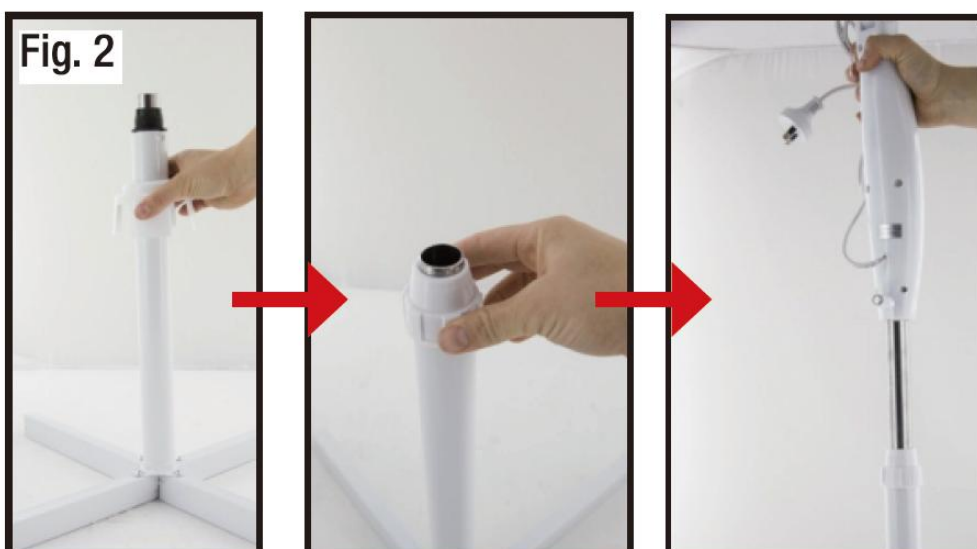
ASSEMBLY INSTRUCTIONS

Assembling the fan base:

1. Place the two bars of the cross base in position on the floor and remove the screws. Place the base tube in position on the cross base and affix with the four screws A. Then attach the feet to each end of the cross base, as illustrated (Fig. 1).



2. Slide the base cover over the base tube. Unscrew the fastening connector and adjust the extension pole to the appropriate length. Then attach the fan's motor part and switch box and tighten securely with screw B, as illustrated (Fig. 2).

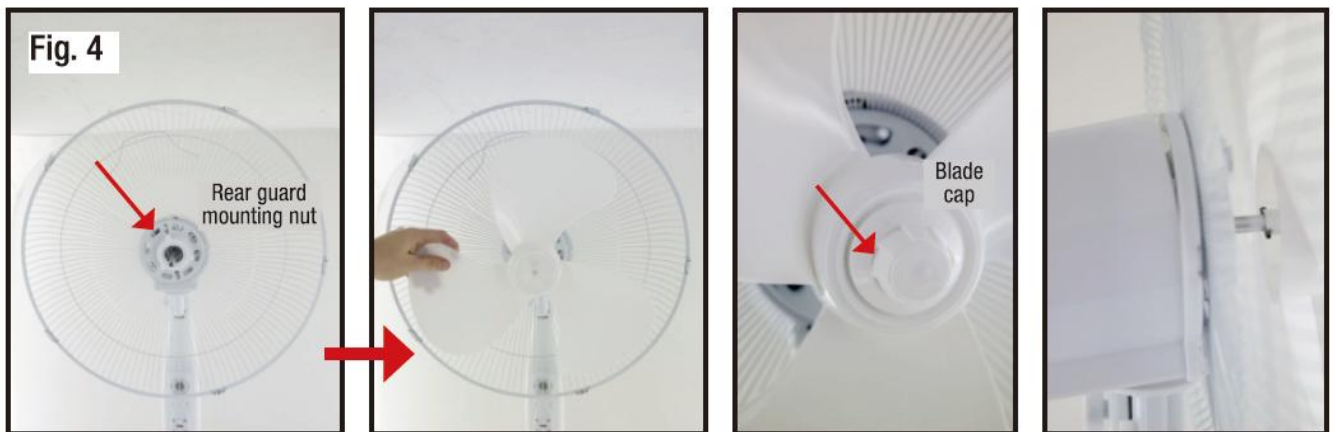


Assembling the blade & guards:

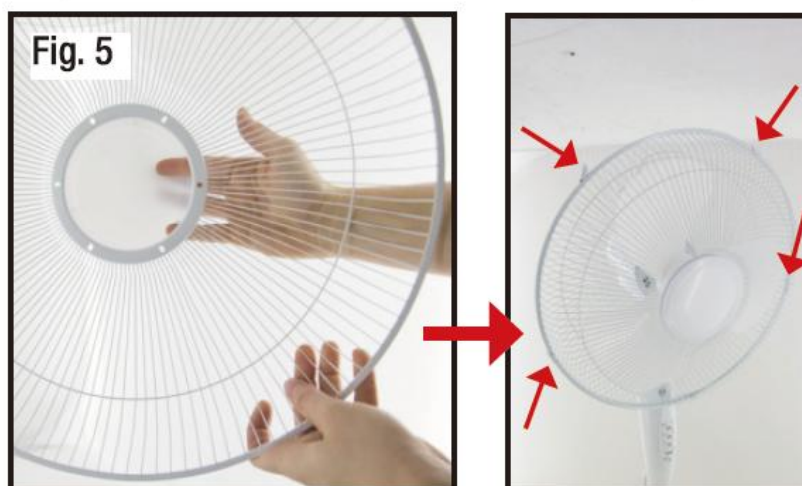
1. Unscrew the blade cap by turning it clockwise, then turn the rear guard mounting nut anticlockwise (Fig. 3).



2. Place the rear guard on the motor shaft and secure it with the nut. Slide the blade onto the motor shaft and fasten it with the blade cap, turning it counter clockwise to tighten it securely, as illustrated (Fig. 4).



3. Use the three small screws to attach the round centre plate to the front guard, then fit the front guard against the rear guard and close the clips together to secure as illustrated (Fig. 5).



Your Pedestal fan is now fully assembled.

OPERATING INSTRUCTIONS

NOTE: Before inserting the plug into a power outlet, make sure that the correct voltage being used corresponds to what is indicated on the rating label, and that the socket has an earth facility.

CAUTION:

- Select a suitable location for the unit. Always choose a safe location in accordance to the safely recommendations outlined.
- The fan should always be switched off when making any adjustments to the fan head angle.
- Always keep the unit upright.

Before inserting the plug into a power outlet, make sure that the correct voltage being used corresponds to what is indicated on the rating label, and that the socket has an earth facility.

ON/SPEED:

- Press this button to switch on the fan.
- When the unit is switched on, press this button to change the fan speed through 3 Speeds: Low, Medium or High.
- The speed can be adjusted in all modes.

SWING:

- Press this button to activate the oscillation function for widespread breeze distribution.
- When the unit is set to oscillate, press this button to stop oscillation.

MODE:

- Press this button to change the fan mode through different breeze modes.
Normal: In this mode the fan operates at a constant speed.
Nature: In this mode the fan simulates a natural breeze mode by cycling on and off, as in nature.
Sleep: In this mode the fan simulates a soft, gentle breeze mode, starting with a strong breeze and then gradually reducing the breeze to medium and then low before repeating this cycle.

TIMER:

- Pressing this button sets the timer in increments of 0.5 hour to a maximum of 7.5 hours. After the timer runs out, the fan will automatically shut off.
- There are four indicator lights for the timer: 0.5H, 1H, 2H & 4H.

For example:

- 0.5H illuminated indicates the timer will shut off after 30 minutes.
- 0.5H and 2H illuminated indicates it will shut off after 2.5 hours.
- 0.5H, 1H, 2H & 4H illuminated indicates it will shut off after 7.5 hours.

OFF:

- Press this button to switch off the fan.

Tilting the Fan Head:

- The fan head can be tilted so that the breeze is targeted at an angle. To tilt the fan head, make sure the fan is disconnected from the power supply.
- Slightly loosen the tilt screw. Steady the motor housing of the fan with one hand and grip the fan grille with the other. Carefully tilt the fan head until it reaches the desired angle (Fig. 6).

Fig. 6



CAUTION: Do not tilt back the fan head further than it is intended to go. Doing so will damage the unit.

CAUTION: The fan should be switched off when making this adjustment.

NOTE: The head will not latch into the low or mid position until the guard and blade are fitted to the motor.

1. To adjust the height of the pedestal fan, loosen the eight adjustment screw carefully raising or lowering the fan and firmly re-tighten the height adjustment nut.

CAUTION: The fan should be switched off when making this adjustment.

CARE & CLEANING

NOTE: If the power cord set of this appliance becomes damaged, discontinue use. Repairs should be undertaken only by a qualified technician.

CAUTION: To avoid of electric shock, you must always switch off and unplug the unit before cleaning.

- Your appliance must be switched OFF via the main power supply and unplugged before proceeding with any cleaning.
- Clean the housing with a damp cloth, a vacuum cleaner or a dusting brush.
- We recommend lightly running a vacuum cleaner brush nozzle over the fan grill to remove any dust or dirt that may have accumulated.
- Never use flammable or abrasive cleaning agents such as benzene or spirits to clean the appliance.
- Never immerse the appliance in water!
- Avoid all other types of detergents, cleaners, solvents that may contain chemicals, which could damage parts of the unit.
- If the unit will not be used for a long period of time, store in a dry place.

SPECIFICATIONS

Model	Description	Voltage	Frequency	Wattage
HF40BRG	40cm Pedestal Fan (Black) with Remote Control	220-240V~	50Hz	45W

CUSTOMER SERVICE

Australian Customer Service
GAF Control (Sales) Pty Ltd
P.O Box 19
Altona North Victoria 3025
Phone: 1300 659 489

Hours: 9am-5pm (EST) Mon-Fri

www.gafcontrol.com.au

*This product may vary slightly to the product illustrated due to ongoing product development.