

pure acoustics®

SBW-175

Audio Soundbar & Subwoofer



Instructions Guide

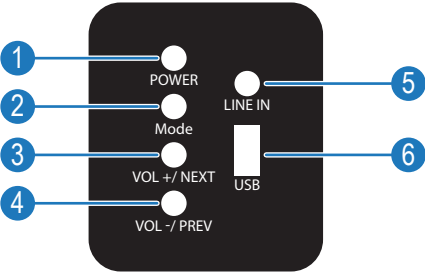
Contents

Controls And Functions	1
What's In The Box?	6
Instructions Guide	7
Connections	8
Optional: Using a Optical Input.....	9
Bluetooth Operation.....	10
AUX-In.....	11
FM Mode	12
Troubleshooting	13
Warranty	14
Safety Information	15

1 YEAR
WARRANTY

Controls And Functions

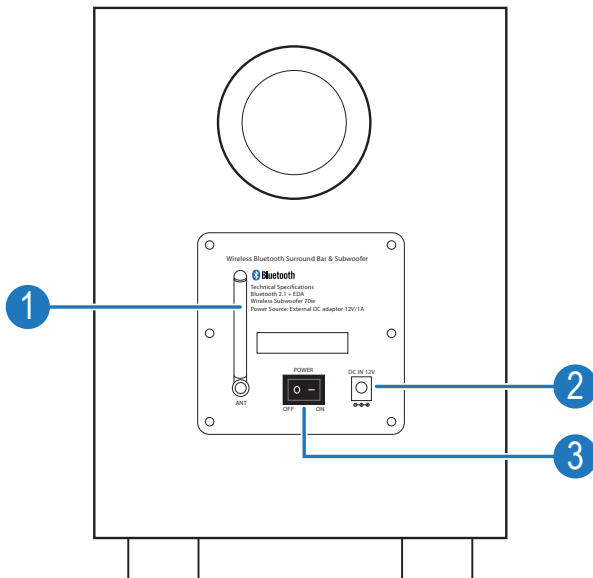
Side View / Control Buttons



- 1. Power
- 2. Mode
- 3. Volume +/Next
- 4. Volume-/previous
- 5. USB Function

Controls And Functions

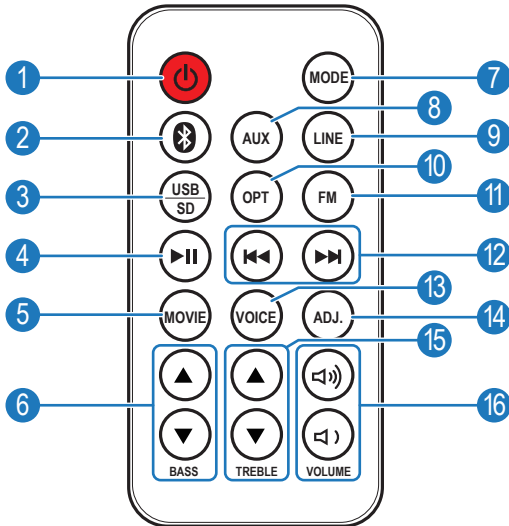
Sub Woofer



1. Bluetooth Receiver
2. DC adapter input
3. Power Switch

Controls And Functions

Remote Control



1. Power On/Off
2. Bluetooth Mode
3. USB/SD Mode
4. Play/Pause
5. Movie Mode
6. Bass Adjustment
7. Mode Select
8. Aux Mode
9. Line in
10. Optical Audio Port
11. FM Radio
12. Previous/Next
13. Voice
14. Adjustment
15. Treble Adjustment
16. Volume Adjustment

Controls And Functions

Remote Control Functions

Remote Control Operation

To use the remote control, point the remote at the remote sensor on the front panel. You will be able to view any setting changes via the remote on the front right of the soundbar.

The remote control works within a distance of approximately 8 meters from the sensor and within an angle of 30 degrees from the left and ride side.

Sound Functions

MOVIE - Recommended setting for film viewing and for audio that requires a punchy and bass-like sound

VOICE - Recommended for TV viewing when cinematic sound experience is not required.

ADJ - Setting to adjust bass and treble sound of the sound bar and sub-woofer

BASS - Adjust the bass

Treble - Adjust the treble



Controls And Functions

Please Note:

Remove the batteries when you don't intend to use the remote control for a long time.

Weak batteries can leak and severely damage the remote control.

Be environmentally friendly and dispose of batteries according to government regulations.

Changing the battery

The battery compartment is at the back of the remote.



Pinch the left side of the battery compartment and pull the compartment towards you to release from the remote.



Insert a Lithium cell CV2025 3V battery within the compartment and push the compartment back into the remote.



What's In The Box?

Box Contents

1. Pure Acoustics Surround Sound Bar
2. Pure Acoustics Wireless Subwoofer
3. Remote Control
4. 2 x DC-in Power Cables
5. AUX Line In TV Connection Cable
6. Mounting parts


Getting Started

Plug the sound bar and subwoofer into the mains via the power cables provided. The sound bar will now light up on the front panel.


Ensure that the subwoofer is also switched to 'on' at the back of the unit.

After a few seconds, the sound bar and the subwoofer will wirelessly connect to each other.

As the sound bar is now set up, you can now connect them to the following audio: TV Connection, Bluetooth, AUX-in and FM.



Ensure that the power supply voltage is in the voltage of 100V~240V.



Please note:

This unit is designed to use adapter.

Connecting the unit to any other power source may cause damage to the unit.

Unwind the mains cable to its full length. Connect the mains plug to a mains socket. Make sure the mains plug is fully inserted into the mains socket.

The mains plug/appliance coupler is used as the disconnect device, the disconnect device must remain readily operable.

Connect the Adapter to the unit and AC Socket.

Instructions Guide

Connections

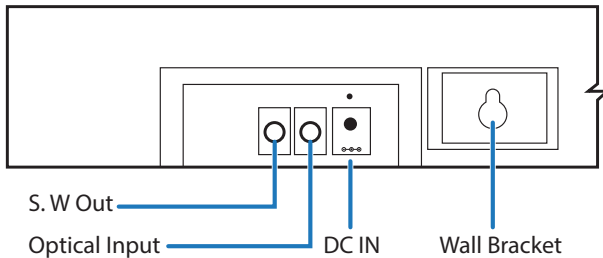
Using the AUX 'Line In' Connection

Use the RCA Stereo Audio Cable to connect the TV's stereo RCA(L/R).

Connect the audio output socket to the side of the Sound bar via the 'LINE IN' input sockets of the unit.

Once your TV and SBW-175 are connected, press the AUX button on the remote control or press the source button on the unit to choose the AUX function.

Turn on your television set to use the SBW-175



Optional: Using a Optical Input

You will need: An audio source with an Optical Audio Output and a Digital Optical Audio cable (not included)

Connect the Digital Optical Audio cable to the optical output on the TV and to the Optical Input on the speaker bar.

Press the POWER button on side panel or POWER button directly on the remote control to switch on the unit.

Press the OPT button on the remote control to switch to Optical mode or select the MODE button on the sound bar repeatedly to select the Optical mode. OPT will now display on the front control panel of the soundbar.

Using the native controls on your connected device, make sure the audio settings are set to PCM or Optical Audio and are turned On.

Audio from the connected audio source will now be played through the speakers.

Instructions Guide

Bluetooth Operation

Pairing a Bluetooth Device for the First Time

Press the POWER button on the unit or the POWER button on the remote control to switch on the unit.

Select and press the BT button directly on the remote control or press the MODE button repeatedly to enter Bluetooth mode, indicated by Bluetooth displaying on the Soundbar panel.

Using the native controls on your Bluetooth device, select the "SBW-175" in your Bluetooth settings to pair. If your device requests a password, enter the default "0000".

When successfully paired and connected, a beep will issue from the unit.

Use the Bluetooth connected device to select a track and play/pause/skip using the device. Audio will now be played from the connected Bluetooth device through the SBW-175 Sound System.

Please note:

After initial pairing, the unit will stay paired unless unpaired manually by the user, or until it is erased due to a reset of the device.

If your device should become unpaired or you find it is unable to connect, repeat the above steps.


AUX-In

Connecting your device via the AUX 'Line In'


Press the POWER button on the unit or the POWER button on the remote control to switch on the unit.

Select and press the LINE button directly on the remote control or press the MODE button repeatedly to enter LINE/AUX mode, indicated by LINE displaying on the Soundbar panel.

Connect an AUX cable provided in the 'Line In' port on the side panel of the Soundbar and connect this to your chosen device.



Use the AUX Line-In connection to select and play audio from your chosen device. Control the track, play/pause/skip, and control the volume using the device.



Please ensure that the volume is turned up on your device to receive the best sound from the Soundbar and Subwoofer.

Please note:

The unit will stay paired unless unpaired manually by the user by removing the AUX Line-In cable.

Instructions Guide

FM Mode

Listening to FM

Press the POWER button on the unit or the POWER button on the remote control to switch on the unit.

Select and press the FM button directly on the remote control or press the MODE button on the side panel of the soundbar repeatedly to enter FM mode. FM will now display on the front Soundbar panel.

Ensure that the wire aerial on the back panel of the sound bar is extended.

Press the Play/Pause button '>||' button to auto-scan preset stations or scroll to a specific preset station by using the '<<<' or the '>>>' keys whilst in FM mode. Preset stations will display as 'P 01', 'P 02' etc.

Please note:

If you are having trouble with receiving stations, complete another auto-scan and adjust the aerial if need be.

Troubleshooting

Troubleshooting

Issue	Possible causes	Solution
No power	The unit is not connected to the power supply or the power cable is not properly connected to the outlet	Make sure the unit is connected to the power supply. Try connecting the cable to a different outlet.
No sound or distorted sound	<ol style="list-style-type: none">1. The audio cables aren't properly connected.2. The volume is set to the minimum level3. The sound is switched off	<ol style="list-style-type: none">1. Confirm that the audio cables are connected to correct inputs.2. Turn up the volume3. Press MUTE on the remote to ensure it is not on this setting. Press Play/Pause
The IR remote control is not functioning properly	<ol style="list-style-type: none">1. Check that there are batteries installed properly.2. Batteries may be depleted and in need of replacement.3. Remote control sensor is obstructed or out of range.	<ol style="list-style-type: none">1. Install 1 Lithium CR2025 3V cell battery.2. Replace the battery with a new one.3. Remove any packaging and make sure the remote control is pointed at the right of the panel. Make sure remote is in operating range.
The buttons on the unit are not working	The unit is being interfered with static electricity etc	Switch off and unplug the unit, and then connect the plug to the power supply to switch on again.

Specifications

Specifications

Power Supply	DC 12V/1A
Power Consumption	75W
Working Temperature	-10~+35C
Relative Humidity	5%~90%
Power Output (Max)	75W*2 + 75W Subwoofer
Frequency Response	+/- 3dB (40hz ~ 20KHz)

Warranty

Pure Acoustics products have been designed and manufactured to the highest quality standards. However, in the event that something malfunctions, Pure Acoustics and your local authorized distributor warrant free of charge parts and labor (some exclusions may apply) for a period of one year. This warranty is only valid for the original owner. This warranty is limited to the repair of the product. This warranty will not apply to units that were subject to misuse, neglect, abuse, alteration or improper installation. This warranty will not cover damage due to fire, water, heat, lightning or any other cause beyond the control of Pure Acoustics. Retention of your original dated receipt is required in order to obtain warranty service from your local authorized Pure Acoustics Dealer.

Safety Information

1. Read these instructions.
2. Keep these instructions. Instructions are also available for download at www.majorityradios.co.uk
3. Heed all Warnings
4. Follow all instructions
5. Do not clean the apparatus near or with water
6. Do not block any ventilation openings. Install in accordance with the manufacturer's instructions
7. Do not block any ventilation openings. Install in accordance with the manufacturer's instructions.
8. Do not install near any heat sources such as radiators, heat registers, stoves, or other apparatus (including amplifiers) that produce heat.
9. Protect the power from being walked on or pinched particularly at plugs, convenience receptacles, and the point where they exit from the apparatus.
10. Only use attachments/accessories specified by the manufacturer.
11. Unplug this apparatus during light storms or when unused for long periods of time.
12. Refer all servicing to qualified service personnel. Servicing is required when the apparatus has been damaged in a way, such as power-supply cord or plug is damaged, liquid has been spilled or objects have fallen into the apparatus, the apparatus has been exposed to the rain or moisture, does not operate normally or has been dropped.
13. No naked flame sources, such as lit candles, should be placed on the apparatus.
14. Dispose of used electrical products and batteries safely according to your local authority and regulations.

ADDITIONAL WARNINGS

The apparatus shall not be exposed to dripping or splashing and no objects filled with liquid, such as vases, shall be placed on the apparatus.

Main plug is used to disconnect device and it should remain readily operable during intended use. In order to disconnect the apparatus from the main mains completely, the mains plug should be disconnected from the main socket outlet completely. Battery shall not be exposed to excessive heat such as sunshine, fire or the like.

RECYCLING ELECTRICAL PRODUCTS

You should now recycle your waste electrical goods and in doing so help the environment.



This symbol means an electrical product should not be disposed of with normal household waste.

Please ensure it is taken to a suitable facility for disposal when finished with.

IMPORTANT: Please read all instructions carefully before use and keep for future reference.



Risk of electric shock.
Do not open



Read all instructions carefully before use and keep for future reference



When servicing, use only identical replacement parts



CAUTION

RISK OF ELECTRIC SHOCK
DO NOT OPEN



ATTENTION

RISQUE D'ELECTROCUTION
NE PAS OUVRIR



IMPORTANT: Please read all instructions carefully before use and keep for future reference





www.pure-acoustics.com

