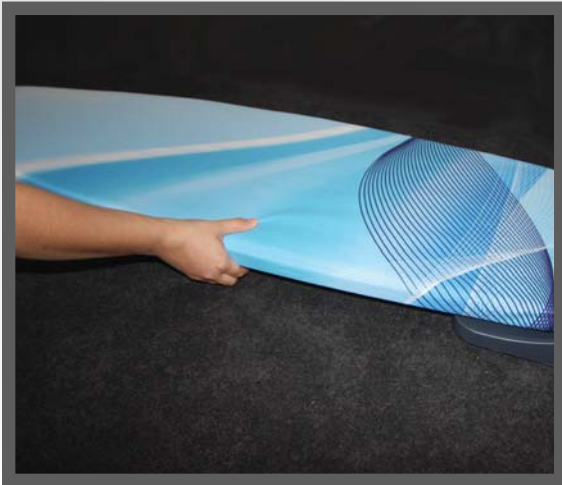


# OPERATING INSTRUCTIONS

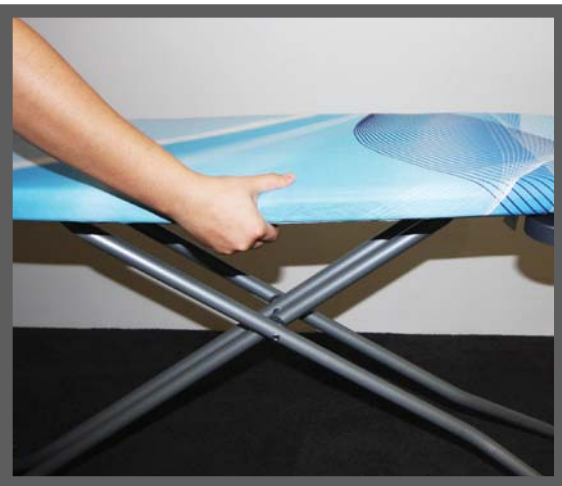
# LARGE IRONING BOARD



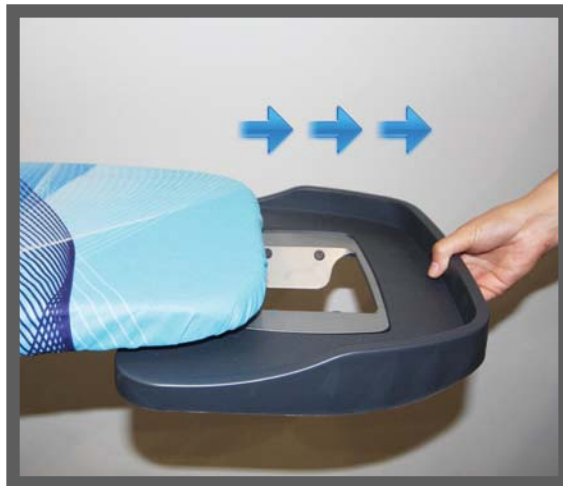
**To Open:** Lay the ironing board down in horizontal position and lift the release lever. Whilst holding down the release lever, lift the board upwards until the legs are fully extended. Release the lever and the ironing board will lock into the highest height setting.



**Adjusting Height:** To increase or decrease the height of the ironing board, lift the release lever and either lift upwards or push downwards to reach the desired height setting. Release lever at desired height and wait for the click before releasing your grip on the board.



**To Close:** Ensure the iron rest has been retracted before attempting to close. Support the ironing board horizontally with both hands and use the fingers of one hand to trigger the release lever on the underside of the ironing board. Guide the board into the closed horizontal folded position.



**Retractable Iron Rest Operation:** To operate the iron rest, pull the rest outward from beneath the ironing board until fully extended. After ironing, ensure the iron rest is fully retracted before storing.